



EVENTS AT ST STEPHEN'S HOUSE

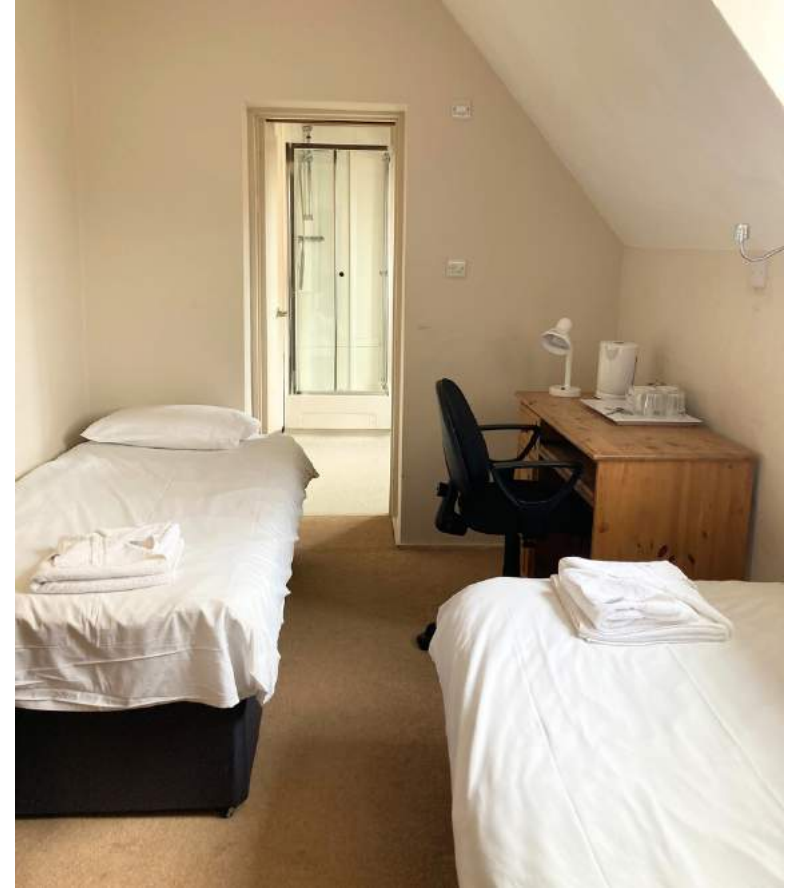


WHO ARE WE?

WE ARE A SMALL AND FRIENDLY ANGLICAN THEOLOGICAL COLLEGE BASED A STONE'S THROW FROM THE COWLEY AND IFFLEY ROADS IN EAST OXFORD, AND ONLY A 15-MINUTE WALK FROM THE CITY CENTRE.

WE ARE UNIQUE IN BEING ABLE TO OFFER EXCLUSIVITY TO CLIENTS LOOKING FOR A PRIVATE AND PERSONAL VENUE FOR THEIR EVENT. WITH A VARIETY OF MEETING ROOMS, ST STEPHEN'S HOUSE HAS A NUMBER OF UNIQUE AND SPECIAL SPACES TO CHOOSE FROM, INCLUDING A LARGE, NEO-GOTHIC CHURCH AND CLOISTER DESIGNED BY THE RENOWNED VICTORIAN ARCHITECT, GEORGE FREDERICK BODLEY, WE PROVIDE A BESPOKE FEEL TO EVERY EVENT.

STAY WITH US



OVERNIGHT STAYS ARE AVAILABLE FOR UP TO 62 VISITORS. WE HAVE A VARIETY OF BEDROOM TYPES RANGING FROM SMALL FLATS AND DOUBLE ENSUITES TO SINGLE AND TWIN STANDARD ROOMS.

SHARED BATH AND SHOWER ROOMS ARE CONVENIENTLY CLOSE TO STANDARD ROOMS.

MEET WITH US



OUR ROOMS ARE
COMFORTABLY AND
INDIVIDUALLY
FURNISHED WITH
MODERN TECHNOLOGY
AND ANTIQUE
FURNITURE. WITH A
VARIETY OF SPACES,
WE CAN HOST A WIDE
RANGE OF MEETINGS
AND EVENTS.

THE COURTIN ROOM

LARGE
MULTIPURPOSE
ROOM, COMES
COMPLETE WITH PC,
YEALINK ZOOM
CONFERENCING
SYSTEM,
WHITEBOARD, AND
AIR CONDITIONING.
PERFECT FOR HYBRID
SEMINARS AND
PRESENTATIONS.

AVAILABLE FOR:

- CONFERENCES
- DAY MEETINGS



CAPACITY:

THEATRE: 55

CLASSROOM: 35

BOARDROOM: 20



CAPACITY:
THEATRE: 25
CLASSROOM: 20
BOARDROOM: 16



THE HOPE ROOM

THIS ROOM COMES
COMPLETE WITH PC,
DIGITAL PROJECTOR,
INTERACTIVE
WHITEBOARD, ZOOM
CAPABILITIES, AIR
CONDITIONING &
WONDERFUL
NATURAL LIGHT



AVAILABLE FOR:

- CONFERENCES
- DAY MEETINGS
- EXAMS
- TEAM DAYS



CLOISTERS & GARDENS

A SERENITY OF PEACE
AND TRANQUILLITY,
THE BEAUTIFUL
CLOISTER CONNECTS
THE MAIN COLLEGE
BUILDING TO THE
COLLEGE CHURCH.

CAPACITY: 100



AVAILABLE FOR:

- DRINKS RECEPTIONS
- EXHIBITIONS
- GARDEN PARTIES
- BARBEQUES
- PRIVATE FUNCTIONS

THE DINING HALL

OUR BRIGHT AND AIRY
VICTORIAN DINING
HALL IS AN ADAPTABLE
SPACE, CATERING FOR
GROUPS OF ALL
SHAPES AND SIZES.

OUR FANTASTIC
CATERING TEAM PRIDE
THEMSELVES ON
EXCELLENT SERVICE
AND DELICIOUS MEALS.

AVAILABLE FOR:

- CONFERENCES
- DAY MEETINGS
- PRIVATE DINING



CAPACITY:
HORSESHOE: 70





SJE CHURCH

CAPACITY: 500
(WITH RESTRICTED VIEW)

AVAILABLE FOR:

- CONFERENCES
- MARKETS
- DINNERS
- PRIVATE FUNCTIONS

FOR SMALLER MEETINGS



STAFF
COMMON
ROOM

CAPACITY:
BOARDROOM: 12
THEATRE: 20

CAPACITY:
CLASSROOM: 10
BOARDROOM: 6

THE
KEMP
ROOM





GET IN TOUCH

IF YOU WOULD LIKE TO HOST YOUR NEXT EVENT AT ST STEPHEN'S
CONTACT OUR FRIENDLY AND PROFESSIONAL EVENTS TEAM.

EMAIL:

CONFERENCES@SSHO.AC.UK

TELEPHONE:

01865 599660

[16 MARSTON ST, OXFORD, OX4 1JX](#)